

# M-ERV1000

## BIGGER, BETTER, FASTER, STRONGER

### DESCRIPTION

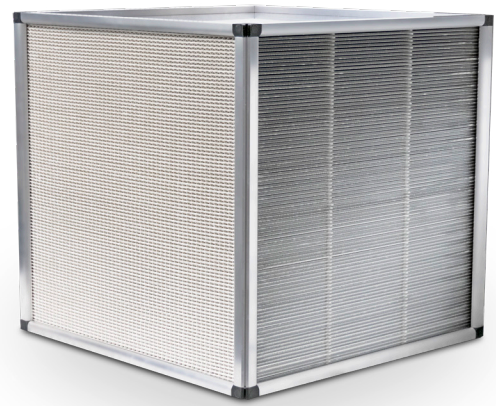
High performance polymer membrane based energy recovery exchanger (ERV) that blocks VOC's, CO<sub>2</sub> and other gases & contaminants with lower pressure drop, higher latent effectiveness and ability to handle larger air flows than previous generations of fixed plate enthalpy exchangers. Manufactured on a fully automated production line.

### PRIMARY APPLICATIONS

Schools, Healthcare, Casinos & Offices

### PRODUCT BENEFITS

- Lower pressure drop on supply air side
- More rigid & robust frame design
- <1% EATR
- Lower frosting temperature (-10°C to -15°C, 14°F to 5°F) and shorter defrosting time
- Blocks a variety of gases & contaminants including CO<sub>2</sub>, formaldehyde, chloroform, toluene & acetone
- Prevents recirculation of odors, irritants & viruses
- Shorter lead times
- ISO846 Hygiene rating of 0 for mold & bacteria growth
- Water washable
- AHRI certified
- UL listed component



The M-ERV1000 is available with a standard base of 1000 mm (39.4 inches) and up to 1000 mm (39.4 inches) width

M-ERV1000	TOTAL EFFECTIVENESS	AIRFLOW (cfm)	PRESSURE DROP (OPEN CHANNEL) (Inches of Water)	BASE DIMENSIONS (mm/in)	MAXIMUM WIDTH (mm/in)
HE	60%	2900	0.6	1000 mm (39.4 in)	1000 mm (39.4 in)
S	52%	5000	1.0		
LP	50%	3200	0.4		

\*Based on width of 1000 mm (39.4 in)



**NORTH AMERICAN OFFICE**  
1455 East Georgia Street  
Vancouver, BC, V5L 2A9,  
Canada  
+1 604 488 1132  
sales@core.life

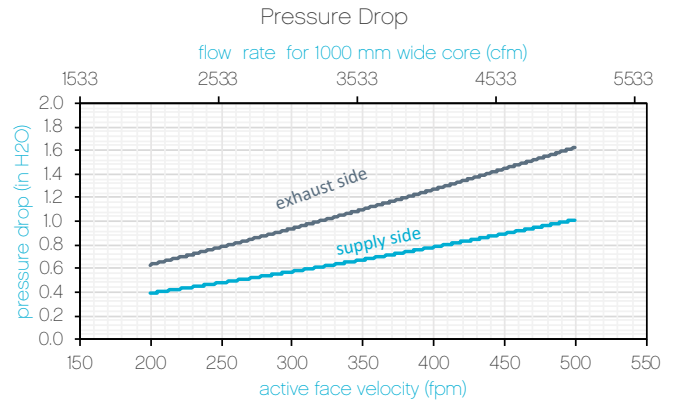
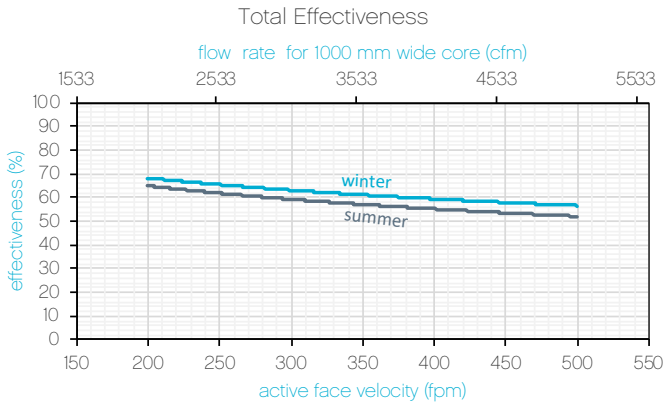
**EUROPEAN OFFICE**  
August-Horch-Straße 7  
08141 Reinsdorf  
Germany  
+49 375 303 50 50  
reinsdorf@core.life



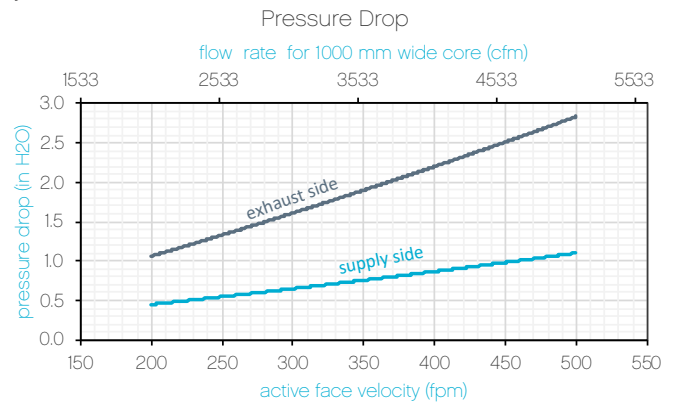
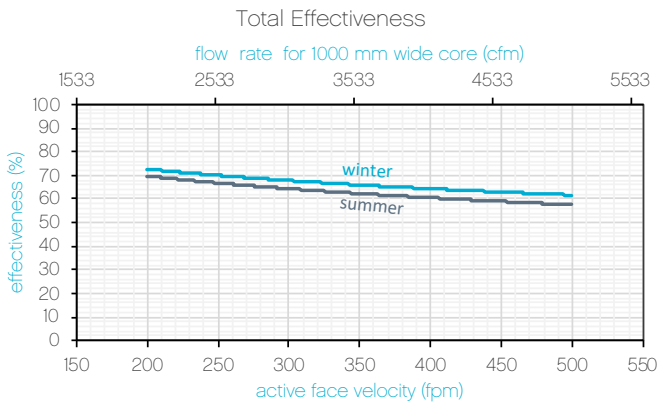
CORE.life

# M-ERV1000

## Standard (S)



## High Efficiency (HE)



## Low Pressure (LP)

