

M-ERV575

BIGGER, BETTER, FASTER, STRONGER

DESCRIPTION

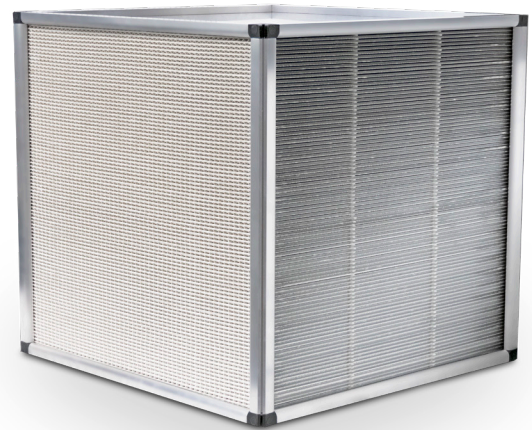
High performance polymer membrane based energy recovery exchanger (ERV) that blocks VOC's, CO₂ and other gases & contaminants with lower pressure drop, higher latent effectiveness and ability to handle larger air flows than previous generations of fixed plate enthalpy exchangers. Manufactured on a fully automated production line.

PRIMARY APPLICATIONS

Schools, Healthcare, Casinos & Offices

PRODUCT BENEFITS

- Lower pressure drop on supply air side
- More rigid & robust frame design
- <1% EATR
- Lower frosting temperature (-10°C to -15°C, 14°F to 5°F) and shorter defrosting time
- Blocks a variety of gases & contaminants including CO₂, formaldehyde, chloroform, toluene & acetone
- Prevents recirculation of odors, irritants & viruses
- Shorter lead times
- ISO846 Hygiene rating of 0 for mold & bacteria growth
- Water washable
- AHRI certified
- UL listed component



The CORE M-ERV575 is available with a standard base of 575 mm (22.6 inches) and up to 1000 mm (39.4 inches) width

M-ERV575	TOTAL EFFECTIVENESS	AIRFLOW (cfm)	PRESSURE DROP (SUPPLY) (Inches of Water)	BASE DIMENSIONS (mm/in)	MAXIMUM WIDTH (mm/in)
HE	60%	1500	0.7	575 mm (22.6 in)	1000 mm (39.4 in)
S	50%	2000	0.6		

*Based on width of 1000 mm (39.4 in)



NORTH AMERICAN OFFICE
1455 East Georgia Street
Vancouver, BC, V5L 2A9,
Canada
+1 604 488 1132
sales@core.life

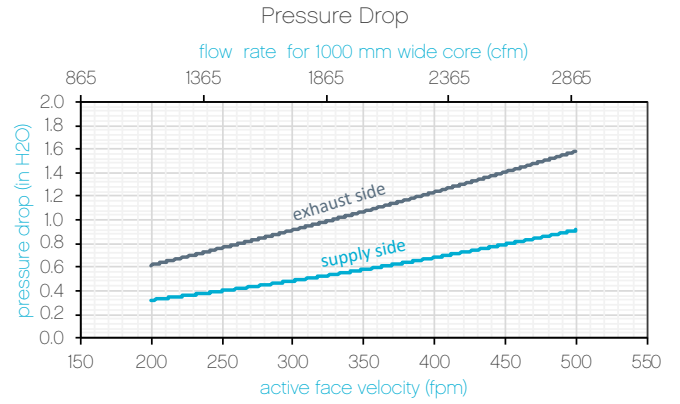
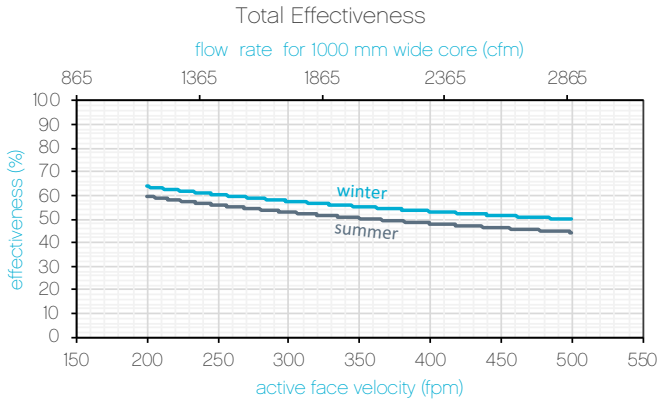
EUROPEAN OFFICE
August-Horch-Straße 7
08141 Reinsdorf
Germany
+49 375 303 50 50
reinsdorf@core.life



CORE.life

M-ERV575

Standard (S)



High Efficiency (HE)

