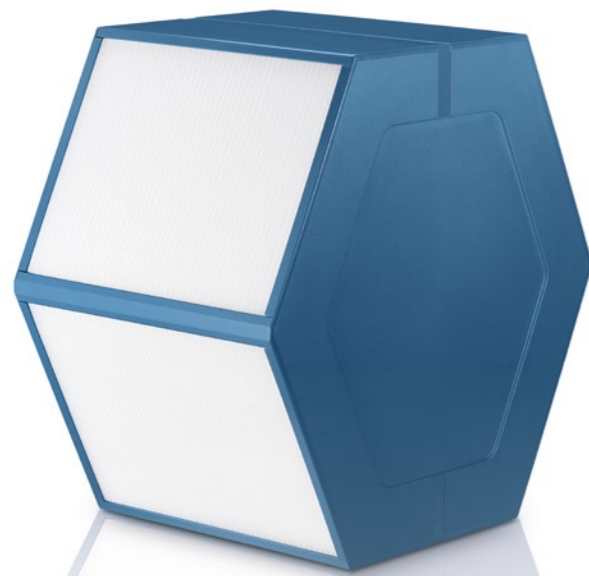


HRV RU160

The Ultimate in efficiency

Description

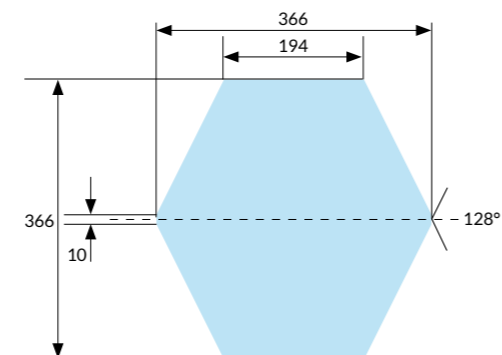
The HRV RU160 is the greatest asset when heat recovery efficiency is the main priority. This energy-saving counterflow heat exchanger focuses on heat transfer and maximizing efficiency without excessive pressure drop. The PET version of the RU160 is UL certified.



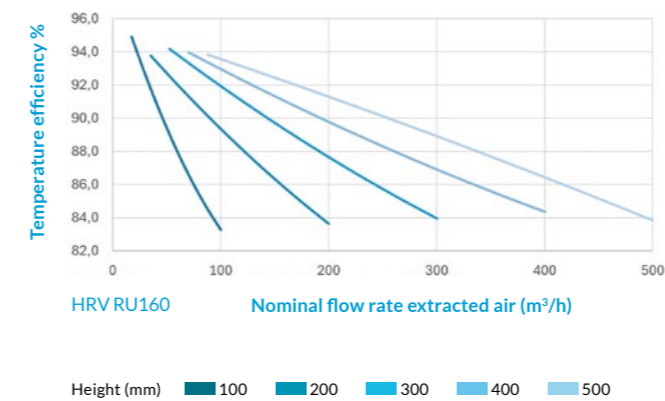
Product benefits

- Special Polystyrene, cleanable, hygienic, mold and bacteria resistant
 - Options: Ribs, condensation drain holes, fire protection grid, PET version
 - Available heights: 100 – 700 mm* (in 5 mm steps)
 - Leakage: < 1 % of nominal flow rate, 100 % leakage tested
 - Material resistance: -20 °C – +50 °C
- * For heights above 500 mm, please contact us.

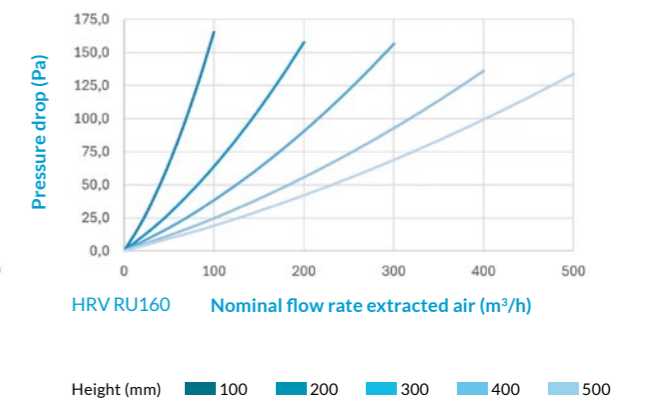
Product dimensions (mm)



Temperature efficiency



Pressure drop



Based on test conditions following NEN-EN 308:2022 (Environmental conditions: temp. 5°C, humidity 70%; inside conditions: 25°C, humidity 25%)
Calculate your specific conditions with our CORE Online Calculator.

Standards

- Hygiene Standard
VDI6022 sheet 1 (01/2018)
ÖNORM H6021 (01/2023)
SWKI VA104-01 (01/2019)
- Fire Standard
DIN EN 13501-1
(Class E with option grid)
Test method EN ISO 11925
- Quality Management
DIN ISO 9001: 2015
- UL Standard: UL1812 /
UL1995 conform

Weights (kg)

Typ	kg
RU160-100	1.50
RU160-200	2.50
RU160-300	3.40
RU160-400	4.40
RU160-500	5.40