

C-HRV366-UL

IMPROVING LIFE AT ITS CORE

DESCRIPTION

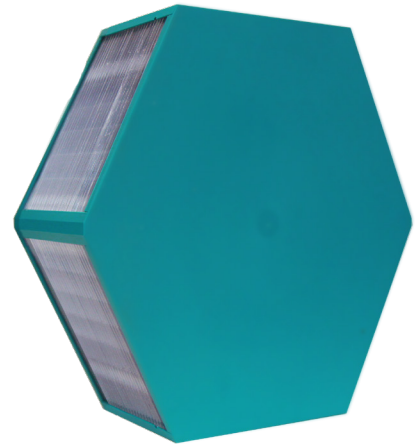
High performing Counterflow Heat Exchanger with maximum efficiency due to our unique and patented channel design. The C-HRV366-UL is characterized by the highest quality, a long life and low maintenance and can be custom made to fit your specific needs.

PRIMARY APPLICATIONS

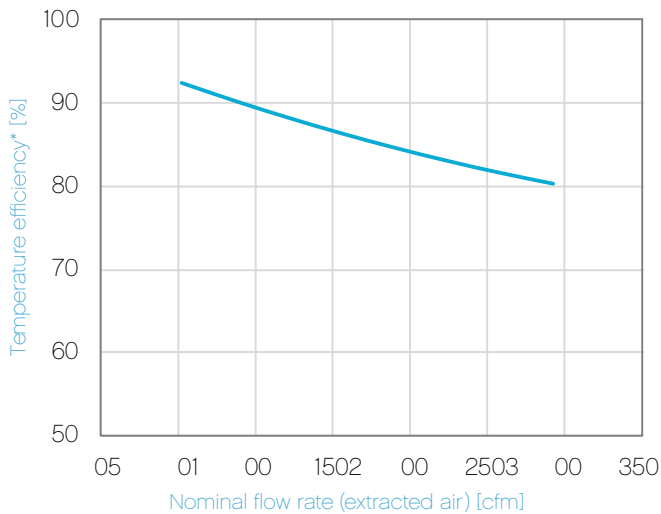
Residential

PRODUCT BENEFITS

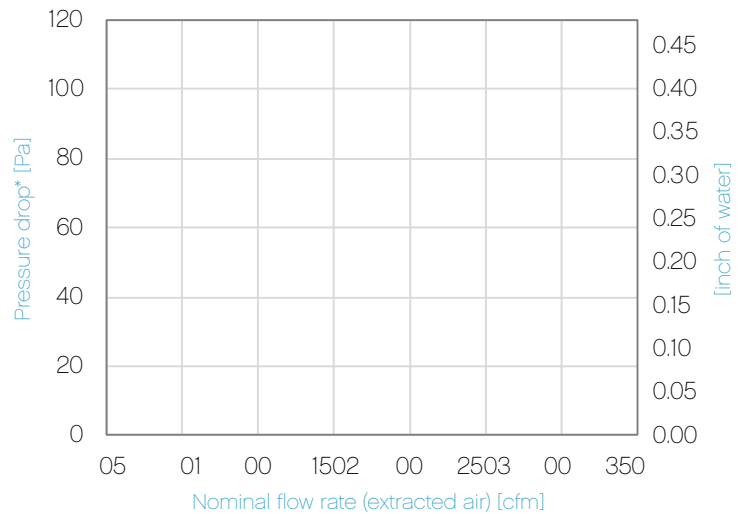
- ETL certified for residential use
- Water washable and hygienic
- Available heights: 90 – 500mm
- Leakage: <1% of nominal flow rate, 100% leakage tested
- Material resistance: -20°C – +60°C



TEMPERATURE EFFICIENCY



PRESSURE DROP



*Based on a CORE height of 500 mm, test conditions following DIN EN 308:1997-06 (temp. intake air: 5 °C; temp. extracted air: 25 °C)



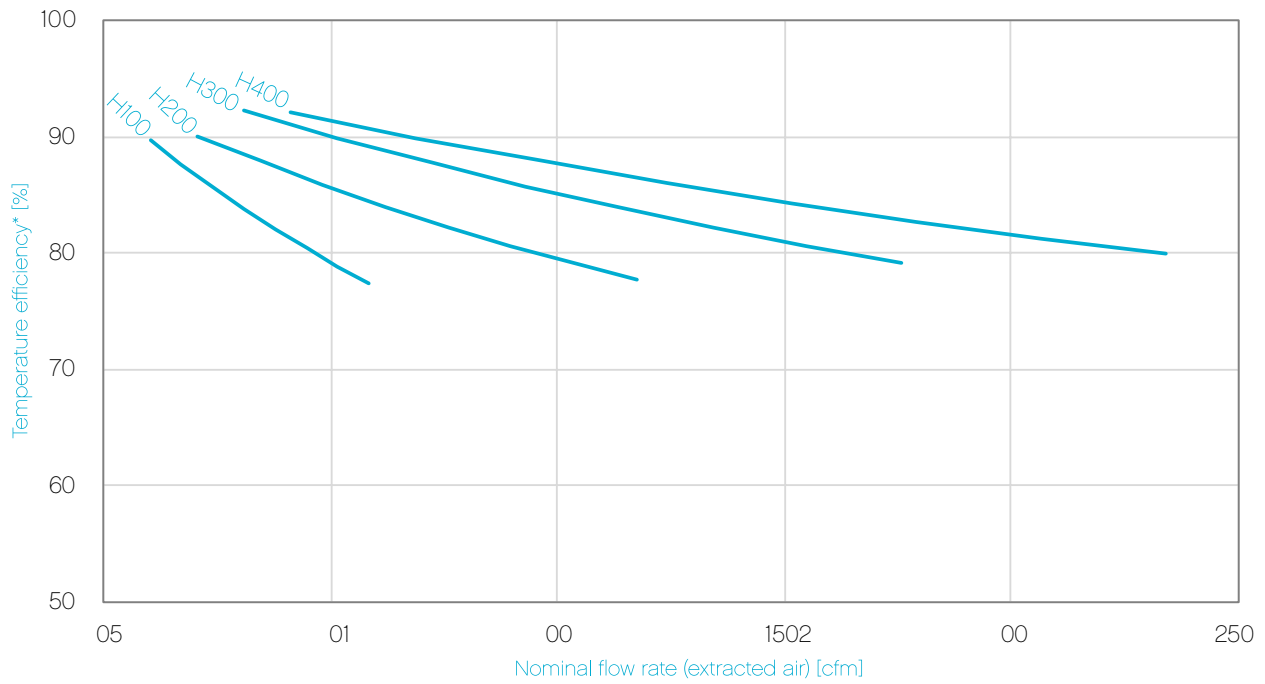
NORTH AMERICAN OFFICE
1455 East Georgia Street
Vancouver, BC, V5L 2A9,
Canada
+1 604 488 1132
sales@core.life

EUROPEAN OFFICE
August-Horch-Straße 7
08141 Reinsdorf
Germany
+49 375 303 50 50
reinsdorf@core.life



C-HRV366-UL

TEMPERATURE EFFICIENCY (HEIGHTS 100 – 400mm)



*Test conditions following DIN EN 308:1997-06 (temp. intake air: 5°C; temp. extracted air: 25°C)

DIMENSIONS (mm)

